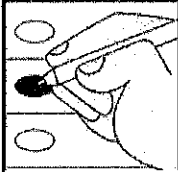


## OFFICIAL ABSENTEE / PROVISIONAL / EMERGENCY BALLOT

Lamar County, Georgia

Precinct: 302-Senior Citizen Bldg, 303-Senior Citizen Bldg, 310-Senior Citizen Bldg, 320-Senior Citizen Bldg

Democratic General Primary Runoff - June 21, 2022



### To Vote:

1. Use Black or Blue Ink to mark the ballot.
2. Completely fill in the empty oval to the left of the candidate name or choice in all races you wish to vote.
3. If voting for a Write-In candidate, completely fill in the oval to the left of the Write-In selection, then write the name of the Write-In candidate in the space provided.

### Warning

- Do **NOT** use red ink or felt tip pen to mark ballot.
- Do **NOT** circle, underline or mark through choices.
- Do **NOT** use check marks or X to mark ballot.
- Do **NOT** mark more choices per race than allowed.
- Do **NOT** sign, cut, tear or damage the ballot.

### If you make a mistake or change your mind on a selection:

- A. Do not attempt to mark through the selection or attempt to erase. Write "**Spoiled**" across **the ballot AND across the return envelope**.
- B. Mail or return the spoiled ballot and envelope to your county board of registrars; a new official absentee ballot will be mailed to you.

**If you decide to vote in-person:** Surrender the ballot to the poll manager at an early voting site within your county or the precinct to which you are assigned. You will then be permitted to vote a regular ballot.

*"I understand that the offer or acceptance of money or any other object of value to vote for any particular candidate, list of candidates, issue, or list of issues included in this election constitutes an act of voter fraud and is a felony under Georgia law." [O.C.G.A. 21-2-284(e), 21-2-285(h) and 21-2-383(a)]*

### For Lieutenant Governor (Vote for One)

- Charlie Bailey
- Kwanza Hall

### For Commissioner of Labor (Vote for One)

- William "Will" Boddie, Jr.
- Nicole Horn

### For Secretary of State (Vote for One)

- Dee Dawkins-Haigler
- Bee Nguyen

### For Commissioner of Insurance (Vote for One)

- Raphael Baker
- Janice Laws Robinson

Sample Ballot

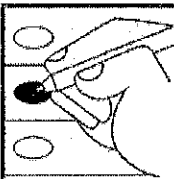
# SAMPLE

## OFFICIAL ABSENTEE / PROVISIONAL / EMERGENCY BALLOT

Lamar County, Georgia

Precinct: 304-LCSC, 311-LCSC, 312-LCSC, 313-LCSC, 314-LCSC, 318-LCSC

Republican General Primary Runoff - June 21, 2022



### To Vote:

1. Use Black or Blue Ink to mark the ballot.
2. Completely fill in the empty oval to the left of the candidate name or choice in all races you wish to vote.
3. If voting for a Write-In candidate, completely fill in the oval to the left of the Write-In selection, then write the name of the Write-In candidate in the space provided.

### Warning

- Do NOT use red ink or felt tip pen to mark ballot.
- Do NOT circle, underline or mark through choices.
- Do NOT use check marks or X to mark ballot.
- Do NOT mark more choices per race than allowed.
- Do NOT sign, cut, tear or damage the ballot.

### If you make a mistake or change your mind on a selection:

- A. Do not attempt to mark through the selection or attempt to erase. Write "Spoiled" across **the ballot AND across the return envelope**.
- B. Mail or return the spoiled ballot and envelope to your county board of registrars; a new official absentee ballot will be mailed to you.

**If you decide to vote in-person:** Surrender the ballot to the poll manager at an early voting site within your county or the precinct to which you are assigned. You will then be permitted to vote a regular ballot.

*"I understand that the offer or acceptance of money or any other object of value to vote for any particular candidate, list of candidates, issue, or list of issues included in this election constitutes an act of voter fraud and is a felony under Georgia law." [O.C.G.A. 21-2-284(e), 21-2-285(h) and 21-2-383(a)]*

### Republican Party Questions

- 1 -

Should the County Commission make it a priority to ensure Lamar County maintains it's rural nature?

- Yes
- No

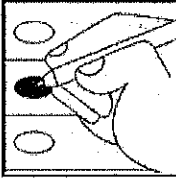
# Sample Ballot

## OFFICIAL ABSENTEE / PROVISIONAL / EMERGENCY BALLOT

Lamar County, Georgia

Precinct: 302-Senior Citizen Bldg, 303-Senior Citizen Bldg, 310-Senior Citizen Bldg, 320-Senior Citizen Bldg

Republican General Primary Runoff - June 21, 2022



### To Vote:

1. Use Black or Blue Ink to mark the ballot.
2. Completely fill in the empty oval to the left of the candidate name or choice in all races you wish to vote.
3. If voting for a Write-In candidate, completely fill in the oval to the left of the Write-In selection, then write the name of the Write-In candidate in the space provided.

### Warning

- Do **NOT** use red ink or felt tip pen to mark ballot.
- Do **NOT** circle, underline or mark through choices.
- Do **NOT** use check marks or X to mark ballot.
- Do **NOT** mark more choices per race than allowed.
- Do **NOT** sign, cut, tear or damage the ballot.

### If you make a mistake or change your mind on a selection:

- A. Do not attempt to mark through the selection or attempt to erase. Write "Spoiled" across **the ballot AND across the return envelope**.
- B. Mail or return the spoiled ballot and envelope to your county board of registrars; a new official absentee ballot will be mailed to you.

**If you decide to vote in-person:** Surrender the ballot to the poll manager at an early voting site within your county or the precinct to which you are assigned. You will then be permitted to vote a regular ballot.

*"I understand that the offer or acceptance of money or any other object of value to vote for any particular candidate, list of candidates, issue, or list of issues included in this election constitutes an act of voter fraud and is a felony under Georgia law." [O.C.G.A. 21-2-284(e), 21-2-285(h) and 21-2-383(a)]*

### For County Commission District 2 (Vote for One)

- Don W. Coffey
- Jason Lovett

### Republican Party Questions

- 1 -

Should the County Commission make it a priority to ensure Lamar County maintains its rural nature?

- Yes
- No

Sample Ballot